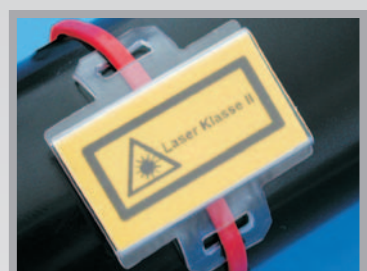
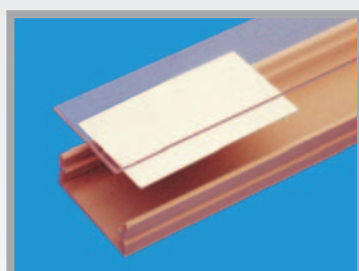
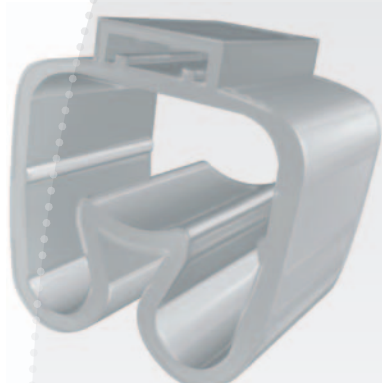
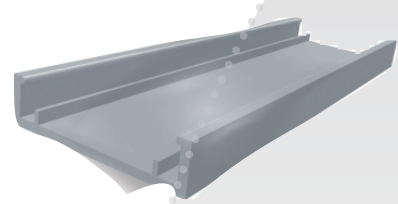
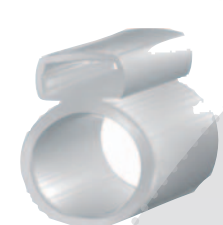
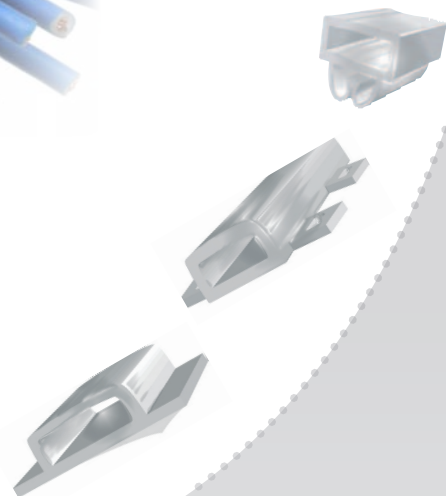


MARKING SYSTEM ACCESSORIES

To complete, enhance and protect the installation of MARKIngenius®, PLOT SYSTEM and RINGcablesys identification and labelling media, select the appropriate transpar-

ent holders for cable markers, push button legend bases to fit the leading brands, legend mounting rail, marker plate and legend strip covers.



PMF

PMF holders are specifically designed to accommodate pairs of appropriately sized cables.


Material: plasticised PVC, self extinguishing to class V0 (UL94), free of Cadmium, Lead, Silicon and Teflon. Resistant to alkali, alcohol, acid and many solvents

⚠ Temperature range:
 • -40°C to +90°C

Use with:	page
MG-TPMF Cable tags, 4mm	8
TPM-ROLL Cable tags, 4mm	27

TRANSPARENT HOLDERS for serieFLAT cable tags MG-TPMF

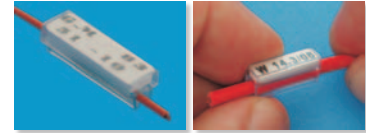


PMF-00	Cable ext. Ø range 0,3 ÷ 2,2mm		Quantity	MARLIN	Rollit
	Cable c.s.a range 0,1 ÷ 0,5mm ²			System	System
	Length mm	Code			
	10	90000	8.000	●	●
	12	90010	7.000	●	●
	15	90020	6.000	●	●
	20	90040	4.000	●	●
	30	90070	2.000	●	●
PMF-01	Cable ext. Ø range 2 ÷ 3,7mm				
	Cable c.s.a range 0,5 ÷ 2,5mm ²				
	10	90100	6.000	●	●
	12	90110	5.000	●	●
	15	90120	4.000	●	●
	20	90140	3.000	●	●
PMF-02	Cable ext. Ø range 3,4 ÷ 4,3mm				
	Cable c.s.a range 2,5 ÷ 4mm ²				
	10	90200	4.000	●	●
	12	90210	4.000	●	●
	15	90220	3.000	●	●
	20	90240	2.000	●	●
PMF-03	Cable ext. Ø range 4 ÷ 6,3mm				
	Cable c.s.a range 4 ÷ 10mm ²				
	10	90300	3.000	●	●
	12	90310	2.000	●	●
	15	90320	2.000	●	●
	20	90340	1.000	●	●
PMF-04	Cable ext. Ø range 6 ÷ 10mm				
	Cable c.s.a range 10 ÷ 25mm ²				
	10	90400	2.000	●	●
	12	90410	1.000	●	●
	15	90420	1.000	●	●
	20	90440	500	●	●
PMF-05	Cable ext. Ø range 9 ÷ 15mm				
	Cable c.s.a range 25 ÷ 70mm ²				
	10	90500	500	●	●
	12	90510	500	●	●
	15	90520	250	●	●
	20	90540	250	●	●
PMF-06	Cable ext. Ø range 14 ÷ 26mm				
	Cable c.s.a range 70 ÷ 240mm ²				
	10	90600	500	●	●
	12	90610	250	●	●
	15	90620	250	●	●
	20	90640	100	●	●
	30	90670	100	●	●
	40	90690	100	●	●

*It is advisable to select the holder size based on the actual external diameter of the cable rather than its indicative c.s.a, due to variations in insulation thickness and conductor format. Holders can be produced in other lengths on request.

PM

TRANSPARENT HOLDERS
for cables markers *MG-TPM, TPM, PMP-30 and PML-30*



PM holders are profiled to allow each type to accommodate a range of cable sizes.

Material: plasticised PVC, self extinguishing to class V0 (UL 94), free of Cadmium, Lead, Silicon and Teflon. Resistant to alkali, alcohol, acid and many solvents

⚡ Temperature range
● -40°C to +90°C

Use with:	page
MG-TPM tags, 4mm	8
TPM tags, 4mm	35
PMP-30 markers	54
PML-30 markers	55

PM-00

Cable ext. Ø range 0,3 ÷ 2,2mm
Cable c.s.a range 0,1 ÷ 0,5mm²



Length mm	Code	Quantity	MARKIN System	PLOT SYSTEM Plotter	RING Manual
10	50000	8.000	●	●	●
10	50002	2.000	●	●	●
12	50010	7.000	●	●	●
12	50012	2.000	●	●	●
15	50020	6.000	●	●	●
15	50022	2.000	●	●	●
18	50030	5.000	●	●	●
18	50032	1.000	●	●	●
21	50040	4.000	●	●	●
21	50042	1.000	●	●	●
23	50050	4.000	●	●	●
23	50052	1.000	●	●	●
27	50060	3.000	●	●	●
27	50062	1.000	●	●	●
30	50070	2.000	●	●	●
30	50072	500	●	●	●
1.000	50080	10	●	●	●

PM-01

Cable ext. Ø range 2 ÷ 3,7mm
Cable c.s.a range 0,5 ÷ 2,5mm²



10	50100	6.000	●	●	●
10	50102	2.000	●	●	●
12	50110	5.000	●	●	●
12	50112	1.000	●	●	●
15	50120	4.000	●	●	●
15	50122	1.000	●	●	●
18	50130	3.000	●	●	●
18	50132	1.000	●	●	●
21	50140	3.000	●	●	●
21	50142	1.000	●	●	●
23	50150	2.000	●	●	●
23	50152	500	●	●	●
27	50160	2.000	●	●	●
27	50162	500	●	●	●
30	50170	1.000	●	●	●
1000	50180	10	●	●	●

PM-02

Cable ext. Ø range 3,5 ÷ 4,3mm
Cable c.s.a range 2,5 ÷ 4mm²



10	50200	4.000	●	●	●
10	50202	1.000	●	●	●
12	50210	4.000	●	●	●
12	50212	1.000	●	●	●
15	50220	3.000	●	●	●
15	50222	1.000	●	●	●
18	50230	2.000	●	●	●
18	50232	500	●	●	●
21	50240	2.000	●	●	●
21	50242	500	●	●	●
23	50250	2.000	●	●	●
23	50252	500	●	●	●
27	50260	1.000	●	●	●
30	50270	1.000	●	●	●
1.000	50280	10	●	●	●

PM-03

Cable ext. Ø range 4 ÷ 6,3mm
Cable c.s.a range 4 ÷ 10mm²



Length mm	Code	Quantity	MARKIN	PLOT SYSTEM	RMS
			System	Plotter	Manual
10	50300	3.000	●	●	●
10	50302	1.000	●	●	●
12	50310	2.000	●	●	●
12	50312	500	●	●	●
15	50320	2.000	●	●	●
15	50322	500	●	●	●
18	50330	1.000	●	●	●
18	50331	500	●	●	●
21	50340	1.000	●	●	●
21	50341	500	●	●	●
23	50350	1.000	●	●	●
23	50352	250	●	●	●
27	50360	1.000	●	●	●
30	50370	500	●	●	●
1.000	50380	10	●	●	●

PM-04

Cable ext. Ø range 6 ÷ 10mm
Cable c.s.a range 10 ÷ 25mm²



10	50400	2.000	●	●	●
10	50402	500	●	●	●
12	50410	1.000	●	●	●
12	50411	500	●	●	●
15	50420	1.000	●	●	●
15	50421	500	●	●	●
18	50430	1.000	●	●	●
18	50431	500	●	●	●
21	50440	500	●	●	●
21	50441	250	●	●	●
23	50450	500	●	●	●
27	50460	500	●	●	●
30	50470	500	●	●	●
1.000	50480	10	●	●	●

PM-05

Cable ext. Ø range 9 ÷ 15mm
Cable c.s.a range 25 ÷ 70mm²



10	50500	500	●	●	●
10	50502	150	●	●	●
12	50510	500	●	●	●
12	50512	125	●	●	●
15	50521	250	●	●	●
18	50530	250	●	●	●
21	50540	250	●	●	●
23	50550	250	●	●	●
27	50560	250	●	●	●
30	50570	250	●	●	●
1.000	50580	10	●	●	●

PM-06

Cable ext. Ø range 14 ÷ 26mm
Cable c.s.a range 70 ÷ 240mm²



10	50600	500	●	●	●
10	50602	125	●	●	●
12	50610	250	●	●	●
15	50620	250	●	●	●
18	50630	250	●	●	●
21	50640	100	●	●	●
23	50650	100	●	●	●
27	50660	100	●	●	●
30	50670	100	●	●	●
1.000	50680	10	●	●	●

*It is advisable to select the holder size based on the actual external diameter of the cable rather than its indicative c.s.a, due to variations in insulation thickness and conductor format. Holders can be produced in other lengths on request.

PM-L

PM-L holders are thinner than PM versions and specifically designed to accommodate pairs of appropriately sized cables.

Material: plasticised PVC, self extinguishing to class V0 (UL 94), free of Cadmium, Lead, Silicon and Teflon. Resistant to alkali, alcohol, acid and many solvents

⚡ Temperature range
 ● -40°C to +90°C

Use with:	page
MG-TPM tags, 4mm	8
TPM tags, 4mm	35
PMP-30 markers	54
PML-30 markers	55

TRANSPARENT HOLDERS

light version for cable markers

MG-TPM, TPM, PMP-30 & PML-30



PM-01L

Cable ext. Ø range 2 ÷ 3,7mm
 Cable c.s.a range 0,5 ÷ 2,5mm²



Length mm	Code	Quantity	MARKIN GENIUS PLOT SYSTEM PMP-30 PML-30		
			System	Plotter	Manual
10	10100	6.000	●	●	●
10	10102	2.000	●	●	●
12	10110	5.000	●	●	●
12	10112	1.000	●	●	●
15	10120	4.000	●	●	●
15	10122	1.000	●	●	●
18	10130	3.000	●	●	●
18	10132	1.000	●	●	●
21	10140	3.000	●	●	●
21	10142	1.000	●	●	●
23	10150	2.000	●	●	●
23	10152	500	●	●	●
27	10160	2.000	●	●	●
27	10162	500	●	●	●
30	10170	1.000	●	●	●
1.000	10180	10	●	●	●

PM-02L

Cable ext. Ø range 3,5 ÷ 4,3mm
 Cable c.s.a range 2,5 ÷ 4mm²



10	10200	4.000	●	●	●
10	10202	1.000	●	●	●
12	10210	4.000	●	●	●
12	10212	1.000	●	●	●
15	10220	3.000	●	●	●
15	10222	1.000	●	●	●
18	10230	2.000	●	●	●
18	10232	500	●	●	●
21	10240	2.000	●	●	●
21	10242	500	●	●	●
23	10250	2.000	●	●	●
23	10252	500	●	●	●
27	10260	1.000	●	●	●
30	10270	1.000	●	●	●
1000	10280	10	●	●	●

*It is advisable to select the holder size based on the actual external diameter of the cable rather than its indicative c.s.a, due to variations in insulation thickness and conductor format. Holders can be produced in other lengths on request.

PMS

TRANSPARENT HOLDERS

slim version for cable markers
 MG-TPM, TPM, PMP-30 & PML-30



PMS holders are designed specifically for use in restricted spaces, eg with sheathed cables, terminal blocks, and multicontact components.

Material: plasticised PVC, self extinguishing to class V0 (UL94), free of Cadmium, Lead, Silicon and Teflon. Resistant to alkali, alcohol, acid and many solvents

⚡ Temperature range:
 • -40°C to +90°C

Use with:	page
MG-TPM tags, 4mm	8
TPM tags, 4mm	35
PMP-30 markers	54
PML-30 markers	55

PMS-01

Cable ext. Ø range 2 ÷ 3mm.
 Cable c.s.a range 0,5 ÷ 1,5mm²



Length mm	Code	Quantity	MARKIN GENIUS		
			System	PLOT SYSTEM Plotter	RING cables Manual
10	80100	5.000	●	●	●
10	80102	1.000	●	●	●
12	80110	4.000	●	●	●
12	80112	1.000	●	●	●
15	80120	4.000	●	●	●
15	80122	1.000	●	●	●
18	80130	3.000	●	●	●
18	80132	1.000	●	●	●
21	80140	3.000	●	●	●
21	80142	1.000	●	●	●
23	80150	2.000	●	●	●
23	80152	500	●	●	●
27	80160	2.000	●	●	●
27	80162	500	●	●	●
30	80170	1.000	●	●	●
1.000	80180	10	●	●	●

PMS-02

Cable ext. Ø range 3,2 ÷ 4mm. Cable c.s.a range 2,5 ÷ 4mm²



10	80200	4.000	●	●	●
10	80202	1.000	●	●	●
12	80210	4.000	●	●	●
12	80212	1.000	●	●	●
15	80220	3.000	●	●	●
15	80222	1.000	●	●	●
18	80230	2.000	●	●	●
18	80232	500	●	●	●
21	80240	2.000	●	●	●
21	80242	500	●	●	●
23	80250	2.000	●	●	●
23	80252	500	●	●	●
27	80260	1.000	●	●	●
30	80270	1.000	●	●	●
1.000	80280	10	●	●	●

PMS-03

Cable ext. Ø range 4 ÷ 5mm. Cable c.s.a range 4 ÷ 6mm²



10	80300	3.000	●	●	●
10	80302	1.000	●	●	●
12	80310	2.000	●	●	●
12	80312	500	●	●	●
15	80320	2.000	●	●	●
15	80322	500	●	●	●
18	80330	1.000	●	●	●
18	80331	500	●	●	●
21	80340	1.000	●	●	●
21	80341	500	●	●	●
23	80350	1.000	●	●	●
23	80352	250	●	●	●
27	80360	1.000	●	●	●
30	80370	500	●	●	●
1.000	80380	10	●	●	●

PMS-04

Cable ext. Ø range 5 ÷ 6,5mm. Cable c.s.a range 10 ÷ 16mm²



10	80400	2.000	●	●	●
10	80402	500	●	●	●
12	80410	2.000	●	●	●
12	80411	1.000	●	●	●
15	80420	1.000	●	●	●
15	80421	500	●	●	●
18	80430	1.000	●	●	●
18	80431	500	●	●	●
21	80440	1.000	●	●	●
21	80441	500	●	●	●
23	80450	500	●	●	●
27	80460	500	●	●	●
30	80470	500	●	●	●
1.000	80480	10	●	●	●

*It is advisable to select the holder size based on the actual external diameter of the cable rather than its indicative c.s.a, due to variations in insulation thickness and conductor format.
 Holders can be produced in other lengths on request.

PMF

TRANSPARENT HOLDERS
other mounting formats
for serieFLAT tags MG-TPMF

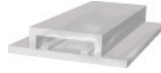
Material: plasticised PVC, self extinguishing to class V0 (UL 94), free of Cadmium, Lead, Silicon and Teflon. Resistant to alkali, alcohol, acid and many solvents

⚠ Temperature range
 -40°C to +90°C

Use with:	page
MG-TPMF tags, 4mm	8
TPM-ROLL tags, 4mm	27

PMF-AC Self adhesive for surface mounting

SELF ADHESIVE



Length mm	Code	Quantity	MARKIN System	Genius System
10	66000	5.000	●	●
12	66010	4.000	●	●
15	66020	4.000	●	●
20	66040	4.000	●	●
30	66070	2.000	●	●
40	66090	1.000	●	

PMF-ET Tie-on (tie width max 6mm) for longitudinal mounting on cables, hoses, tubes and conduit



15	* 63020	2.000	●	●
20	* 63040	1.000	●	●
30	* 63070	1.000	●	●
40	** 63090	500	●	

* 1 tie, ** two ties
 Note: Ties not supplied

PM

TRANSPARENT HOLDERS

other mounting formats
for MG-TPM, TPM, PMP-30 & PML-30



Material: plasticised PVC, self extinguishing to class V0 (UL 94), free of Cadmium, Lead, Silicon and Teflon. Resistant to alkali, alcohol, acid and many solvents

⚡ Temperature range
● -40°C to +90°C

PM-AC

Self adhesive for surface mounting

SELF ADHESIVE

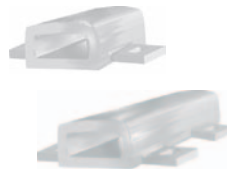


Length mm	Code	Quantity	MARKIN GENIUS		
			System	PLOT SYSTEM Plotter	PLM Manual
10	51000	5.000	●	●	●
10	51002	1.000	●	●	●
12	51010	4.000	●	●	●
12	51012	1.000	●	●	●
15	51020	4.000	●	●	●
15	51022	1.000	●	●	●
18	51030	3.000	●	●	●
18	51032	1.000	●	●	●
21	51040	2.000	●	●	●
21	51042	500	●	●	●
23	51050	2.000	●	●	●
23	51052	500	●	●	●
27	51060	2.000	●	●	●
27	51062	500	●	●	●
30	51070	2.000	●	●	●
30	51072	500	●	●	●
1.000	51080	10	●	●	●

Use with:	page
MG-TPM tags, 4mm	8
TPM tags, 4mm	35
PMP-30 markers	54
PML-30 markers	55

PM-ET

Tie-on (tie width max 6mm) for longitudinal mounting on cables, hoses, tubes and conduit



12	* 53010	2.000	●	●	●
12	* 53012	500	●	●	●
15	* 53020	2.000	●	●	●
15	* 53022	500	●	●	●
18	* 53030	1.000	●	●	●
21	* 53040	1.000	●	●	●
23	* 53050	1.000	●	●	●
27	* 53060	1.000	●	●	●
30	* 53070	1.000	●	●	●
40	** 53090	500	●	●	●

PM-DT

Tie-on (tie width max 4mm) for longitudinal mounting on cables, hoses, tubes and conduit



10	55000	7.000	●	●	●
10	55002	2.000	●	●	●
12	55010	6.000	●	●	●
12	55012	2.000	●	●	●
15	55020	5.000	●	●	●
15	55022	1.000	●	●	●
18	55030	3.000	●	●	●
18	55032	1.000	●	●	●
21	55040	3.000	●	●	●
21	55042	1.000	●	●	●
23	55050	3.000	●	●	●
23	55052	1.000	●	●	●
27	55060	2.000	●	●	●
27	55062	500	●	●	●
30	55070	2.000	●	●	●
30	55072	500	●	●	●
1000	55080	10	●	●	●

* 1 tie, ** two ties
Note: Ties not supplied

PMT

Material: plasticised PVC, self extinguishing to class V0 (UL94), free of Cadmium, Lead, Silicon and Teflon. Resistant to alkali, alcohol, acid and many solvents

⚡ Temperature range
 ● -40°C to +90°C

Use with:	page
MG-TAP legends, 15mm	14
TAP legends, 15mm	45

TRANSPARENT HOLDERS other mounting formats for 15mm and 9mm legends



PMT-AC Self adhesive for surface mounting of 15mm legends

SELF ADHESIVE



Length mm	Code	Quantity	MARKIN Genius	
			System	PLOT SYSTEM Plotter
17	59002	500	●	●
27	59010	1.000	●	●
49	59020	500	●	●
67	59030	250	●	●
1.000	59060	10	●	●

PMT-ET Tie on (tie width max 6mm) for longitudinal mounting on cables, hoses, tubes and conduit of 15mm legends



17	*54000	500	●	●
27	*54010	500	●	●
49	**54020	250	●	●
67	**54030	250	●	●

PMT-DT Tie on (tie width max 14,5mm) for longitudinal mounting on cables, hoses, tubes and conduit of 15mm legends



17	60002	500	●	●
27	60012	500	●	●
49	60020	250	●	●
67	60030	500	●	●
1.000	60060	10	●	●

* 1 tie, **two ties
 Note: Ties not supplied

Use with:	page
MG-TAPW legends, 9mm	15
TAPW legends, 9mm	46

PMT-AC Self adhesive for surface mounting of 9mm legends

SELF ADHESIVE



Length mm	Code	Quantity	MARKIN Genius	
			System	PLOT SYSTEM Plotter
20	59042	500	●	●
35	59050	500	●	●
1.000	59070	10	●	●

PMT-ET Tie-on (tie width max 6mm) for longitudinal mounting on cables, hoses, tubes and conduit of 9mm legends



20	54040	1.000	●	●
35	54050	500	●	●

PMT-DT Tie-on (tie width max 8,5mm) for longitudinal mounting on cables, hoses, tubes and conduit of 9mm legends



20	60042	500	●	●
35	60050	1.000	●	●
1.000	60070	10	●	●

* 1 tie, **two ties
 Note: Ties not supplied

PT

PUSH BUTTON LEGEND BASES
for Ø 22,5mm manual operators



Ø 22.5mm push button legend bases to fit a wide range of popular brands.

Type PTO without locators may offer a higher level of ingress protection depending upon installation method.

All types have a hole behind the legend for rivet fixing, while PT...A types are adhesive backed.

All types can be fitted with a transparent legend cover TAP-CCS 990521.

Material: Polycarbonate, self extinguishing to class V2 (UL 94)

Use with:	page
MG-TAP legends, 15x27mm	14
TAP legends, 15x27mm	45



PTS-22



Size 17x30mm with locators, rivet fixing

Colour	Code	Quantity	MARKIN system	PLOT SYSTEM
■ black	34002	100	●	●
□ grey RAL 7032	34082	100	●	●
□ grey RAL 7035	34092	100	●	●

PTS-24



Size 17x30mm for Telemecanique, rivet fixing

■ black	68002	100	●	●
---------	-------	-----	---	---

PTO-22



Size 17x30mm without locators, rivet fixing

■ black	34802	100	●	●
---------	-------	-----	---	---

PTR-22



Size 17x30mm with locators, rounded, rivet fixing

■ black	34102	100	●	●
□ grey RAL 7032	34182	100	●	●
□ grey RAL 7035	34192	100	●	●

PTSA-22



Size 17x30mm with locators, self adhesive

SELF ADHESIVE

■ black	34602	100	●	●
□ grey RAL 7032	34682	100	●	●
□ grey RAL 7035	34692	100	●	●

PTSA-24



Size 17x30mm for Telemecanique, self adhesive

SELF ADHESIVE

■ black	68602	100	●	●
---------	-------	-----	---	---

PTOA-22



Size 17x30mm without locators, self adhesive

SELF ADHESIVE

■ black	34902	100	●	●
---------	-------	-----	---	---

PTRA-22



Size 17x30mm with locators, rounded, self adhesive

SELF ADHESIVE

■ black	34702	100	●	●
□ grey RAL 7032	34782	100	●	●
□ grey RAL 7035	34792	100	●	●

PL

LEGEND BASES for general purpose applications



PLR legend bases may be fixed to flat surfaces by rivet or in some sizes, by cable tie to tubes, conduits, etc.

PLA versions are self adhesive. TAP-CCS transparent covers may be fitted to protect the legends.

Material: Polycarbonate, self extinguishing to class V2 (UL 94)

Use with:	page
MG-TAP legends, 15mm	14
TAP legends, 15mm	45
RT legend rails	81



SELF
ADHESIVE

PLR Rivet fixing rectangular legend base



Colour	Size mm	Code	Marker plate size MG-TAP & TAP mm	Quantity	System	Plotter
■ black	17x20	34202	15x17	100	●	●
	17x30	34302	15x27	100	●	●
	17x52	*34402	15x49	100	●	●
	17x70	*34502	15x67	100	●	●
□ grey RAL 7032	17x20	34282	15x17	100	●	●
	17x30	34382	15x27	100	●	●
	17x52	*34482	15x49	100	●	●
	17x70	*34582	15x67	100	●	●
□ grey RAL 7035	17x20	34292	15x17	100	●	●
	17x30	34392	15x27	100	●	●
	17x52	*34492	15x49	100	●	●
	17x70	*34592	15x67	100	●	●

PLA Self adhesive rectangular legend base



■ black	17x20	35002	15x17	100	●	●
	17x30	35102	15x27	100	●	●
	17x52	35202	15x49	100	●	●
	17x70	35302	15x67	100	●	●
□ grey RAL 7032	17x20	35082	15x17	100	●	●
	17x30	35182	15x27	100	●	●
	17x52	35282	15x49	100	●	●
	17x70	35382	15x67	100	●	●
□ grey RAL 7035	17x20	35092	15x17	100	●	●
	17x30	35192	15x27	100	●	●
	17x52	35292	15x49	100	●	●
	17x70	35392	15x67	100	●	●

*tie-on (ties not supplied)

TAP-CCS

TRANSPARENT COVERS



Use with:	page
PT push button legend bases	79
PL legend bases	80
RT legend rails	81

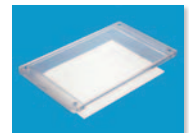
TAP-CCS



Size mm	Code	Quantity	System	Plotter
15x17	990520	540	●	●
15x27	990521	360	●	●
15x49	990522	180	●	●
15x67	990523	90	●	●

CPT

TRANSPARENT COVERS for marker plates and legend bases



Use with:	page
MG-VRT marker plates	21
VRT marker plates	50

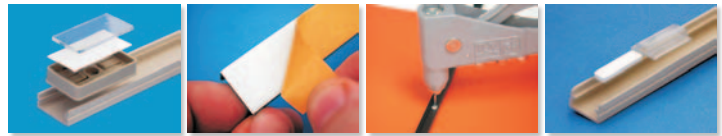
CPT



Size mm	Code	Marker plate MG-VRT & VRT mm	Quantity	System	Plotter
37x79	47590	32x58	10	●	●
47x98	47591	42x78	10	●	●
57x127	47592	52x107	10	●	●
67x109	47594	62x88	10	●	●
97x140	47593	92x120	10	●	●
108x160	47595	102x138	10	●	●

RT

LEGEND RAIL & PROTECTIVE COVERS



Legend rails provide an alternative to direct marking on components.

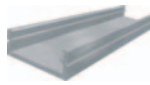
Material: Rigid dielectric high-impact PVC.
Lead-free, self extinguishing according to class V2 (UL94), resistant to acid, alcohol, solvents.
Non-deformable up to 87°C

SELF ADHESIVE

Use with:	page
MG-TAP legends, 15mm	14
MG-17.5 modular legends&labels	20
TAP legends, 15mm	45
VRT 17.5 modular legends	49

RTR-TAP

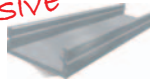
Pre-drilled rail for 15mm legends



Colour	Length mm	Code	Quantity	MARKIN Genius	
				System	PLOT SYSTEM Plotter
■ black	430	990454	25	●	●
	650	990664	25	●	●
	1.000	990524	25	●	●
■ grey	430	990452	25	●	●
	650	990662	25	●	●
	1.000	990502	25	●	●

RTA-TAP

Self adhesive rail for 15mm legends



■ black	430	990455	25	●	●
	650	990665	25	●	●
	1.000	990525	25	●	●
■ grey	430	990453	25	●	●
	650	990663	25	●	●
	1.000	990503	25	●	●

RT-CCP

Protective cover for 15mm legend rail



□ transparent	430	990456	25	●	●
	650	990666	25	●	●
	1.000	990504	25	●	●

RT-CCPS

Protective strip for 15mm legend rail

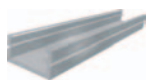


□ transparent	430	990457	25	●	●
	650	990667	25	●	●
	1.000	990735	25	●	●

Use with:	page
MG-TAPW legends, 9mm	15
TAPW legends, 9mm	46

RTR-TAPW

Pre-drilled rail for 9mm legends



Colour	Length mm	Code	Quantity	MARKIN Genius	
				System	PLOT SYSTEM Plotter
■ black	430	990654	25	●	●
	650	990794	25	●	●
	1.000	990526	25	●	●
■ grey	430	990652	25	●	●
	650	990792	25	●	●
	1.000	990505	25	●	●

SELF ADHESIVE

RTA-TAPW

Self adhesive rail for 9mm legends



■ black	430	990655	25	●	●
	650	990795	25	●	●
	1.000	990527	25	●	●
■ grey	430	990653	25	●	●
	650	990793	25	●	●
	1.000	990506	25	●	●

RT-CCW

Protective cover for 9mm legend rail



□ transparent	430	990656	25	●	●
	650	990796	25	●	●
	1.000	990507	25	●	●

RT-CCWS

Protective strip for 9mm legend rail

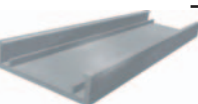


□ transparent	430	990657	25	●	●
	650	990797	25	●	●
	1.000	990734	25	●	●

Use with:	page
PL legend bases	80

RTR-PL

Pre-drilled rail for PL legend bases

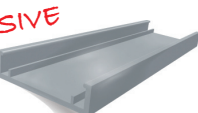


Colour	Length mm	Code	Quantity	MARKIN Genius	
				System	PLOT SYSTEM Plotter
■ black	430	990518	25	●	●
	650	990738	25	●	●
	1.000	990528	25	●	●
■ grey	430	990516	25	●	●
	650	990736	25	●	●
	1.000	990500	25	●	●

SELF ADHESIVE

RTA-PL

Self adhesive rail for PL legend bases



■ black	430	990519	25	●	●
	650	990739	25	●	●
	1.000	990529	25	●	●
■ grey	430	990517	25	●	●
	650	990737	25	●	●
	1.000	990501	25	●	●